

- One mile to Mt. Snow Slopes
- On the "Moover" Bus Route
- Access to V.A.S.T. Snowmobile Trails
- Over 50 Nearby Restaurants
- Golfing
- Shopping
- Snowboarding
- Hiking
- Tubing



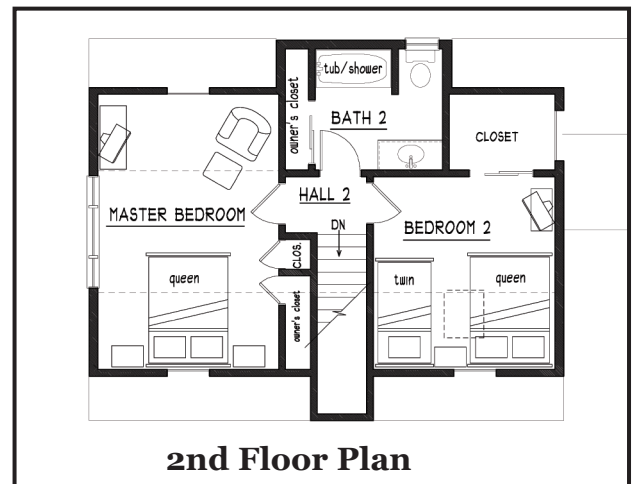
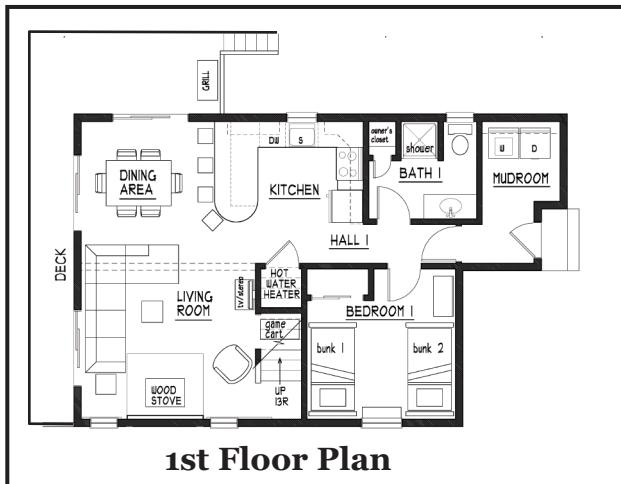
20 Sunne Village Lane
West Dover, VT

- XC Skiing
- Snow Shoeing
- Mountain Biking
- Fishing
- Hunting
- Boating & Boat Tours
- Swimming
- Water Parks
- Horseback Riding

Four Season Relaxation in the Mount Snow Valley



WIFI Internet Service ★ 32" Flat Screen TV in Living Room ★ Cable TV in Every Bedroom



Bedrooms: 3 Open living area, woodstove/fireplace, sectional sofa, large dining area, all new kitchenware and bedding. Gas grill on large deck. W/D, stereo, DVD, board games. Chalet is set back & surrounded by trees for cool summers.

Baths: 2

Sleeps: 8+

Level 1

- Mudroom entry with laundry and ski storage
- 1 Bedroom (2 sets of bunk beds)/ 20" flat screen wall hung TV (cable)
- Full bath with shower
- Living room, dining room, kitchen w/counter seating

Level 2

- Master bedroom 1 queen bed/22" TV (cable)
- Second bedroom 1 queen bed, 1 twin bed/ Queen air mattress available/22" TV (cable)
- Full bath with tub/shower



For Availability & Rates Contact MIKE REPKO:
PHONE: 732-740-5486 EMAIL: miker@mtsnowchalet.com
For additional photos & complete information, visit: www.mtsnowchalet.com